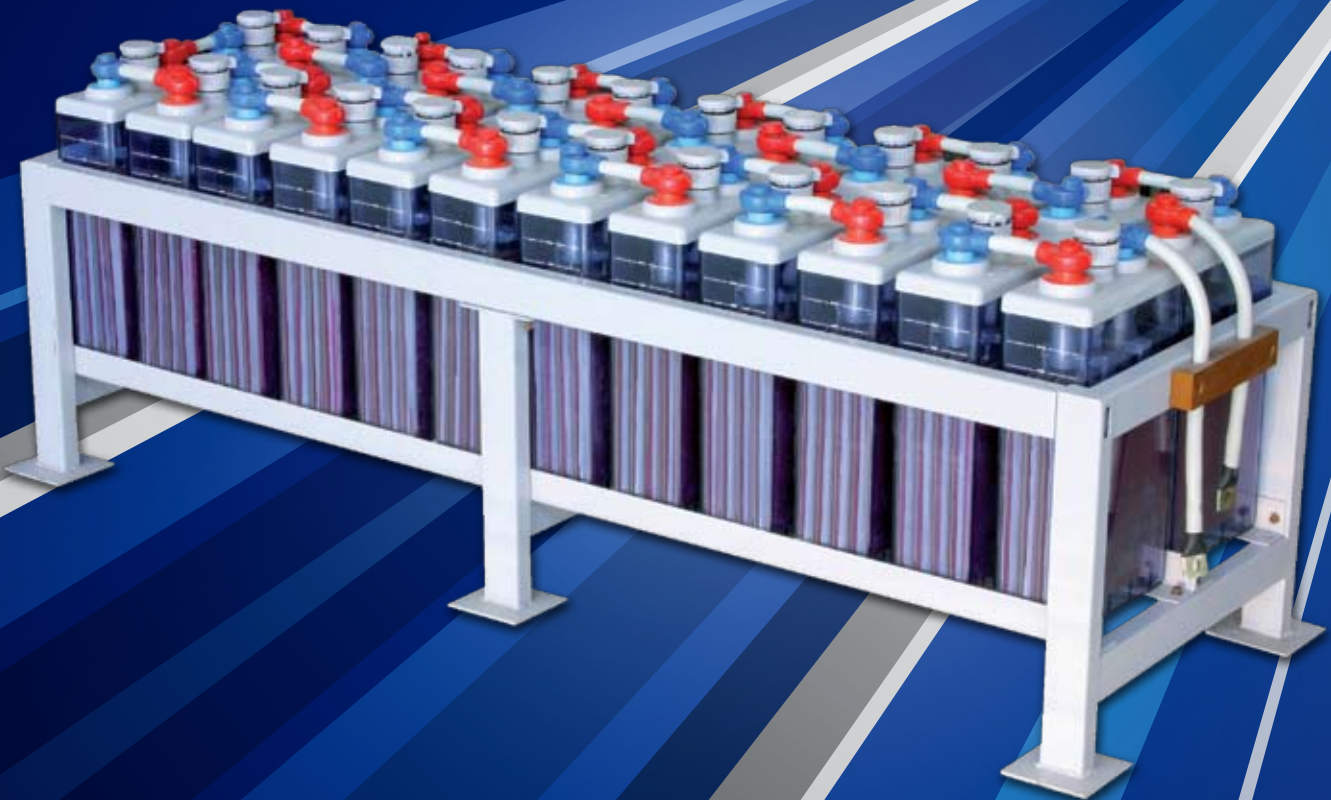


INDUSTRIAL BATTERIES



ISO 9001

NF VLA Tubular Plate Series



Specifications

2 Volt Series :
Capacities, 200Ah – 3000Ah

6 & 12 Volt Series :
Capacities, 50Ah – 300Ah

Features

Vented (Flooded) Lead Acid

Long Design Life

Designed in accordance with
relevant DIN standards.

Neuton Power brand,
exclusive to YHI Power.

Applications

Utilities

UPS Systems

Telecommunications

Emergency Lighting

Solar / Wind Power



NF 2 Volt Series



Features

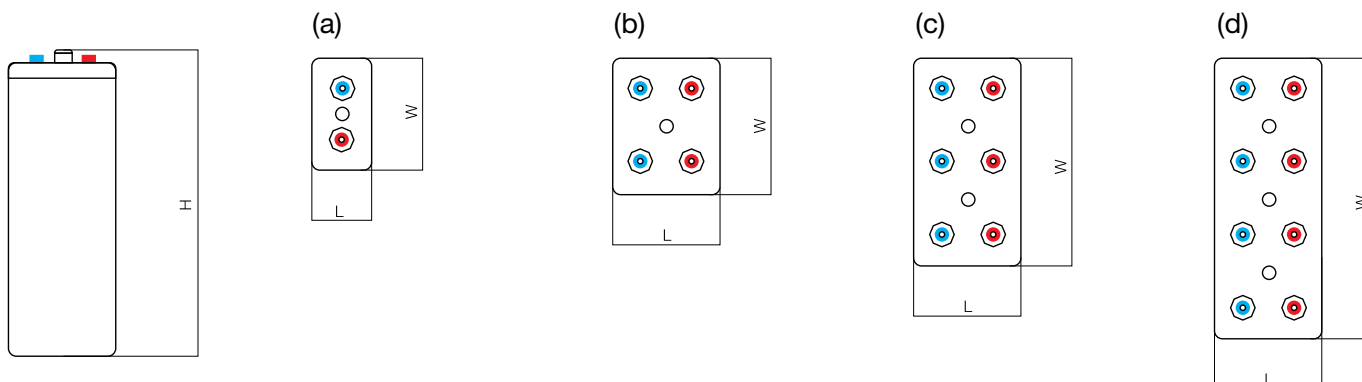
- OPzS Flooded VLA construction
- Long design life: 20 years @ 25°C float
- Wide range of capacities available - up to 3000 Ah
- Wide operational temperature range: -20°C to 50°C .
- Proven reliability
- Meets Battery Design Standards: DIN40736 and IEC60896-1.
- OPzS batteries using tubular plate technology with electrolyte density of 1.240 kg/m³ .
- Container Material: Transparent AS plastic (imported from Italy)
- Tubular Plate with Lead-Antimony multi alloy

General Specifications

Battery Model No.	Voltage (Volts)	Nominal Capacity C ₁₀ To 1.80 Vpc	Length (mm)	Width (mm)	Height (mm)	Weight (Kg)		Terminal Type/ Layout	Internal Impedance (MilliOhms)	Short Circuit Current (Amps)
						Dry	Filled with acid			
NF2(OPzS)-200	2	200	103	206	409	13.5	18.0	M10 (a)	0.62	3129
NF2(OPzS)-300	2	300	145	206	409	19.0	25.0	M10(a)	0.53	3661
NF2(OPzS)-500	2	500	166	206	525	29.0	39.0	M10 (a)	0.45	4311
NF2(OPzS)-600	2	600	145	206	700	34.0	46.0	M10 (a)	0.44	4409
NF2(OPzS)-800	2	800	210	191	700	48.0	64.0	M10 (b)	0.41	4732
NF2(OPzS)-1000	2	1000	210	233	700	57.0	77.0	M10(b)	0.37	5243
NF2(OPzS)-1200	2	1200	210	275	700	68.0	92.0	M10 (b)	0.34	5706
NF2(OPzS)-1500	2	1500	210	275	850	82.0	112.0	M10 (b)	0.32	6063
NF2(OPzS)-2000	2	2000	214	399	826	110.0	150.0	M10 (c)	0.28	6929
NF2(OPzS)-3000	2	3000	212	576	826	163.0	225.0	M10 (d)	0.24	8083

Battery Dimensions & Layout

 = - terminal
  = + terminal
 H = Height L = Length W = Width



2 VOLT SERIES PERFORMANCE DATA @ 25°C

Constant Power Discharge (Watts / Cell)

End Voltage 1.70 Vpc

Model Number	15 Mins	30 Mins	1 Hour	2 Hours	3 Hours	4 Hours	8 Hours	10 Hours
NF2(OPzS)-200	376	302	219	146	109	87	49	41
NF2(OPzS)-300	566	453	330	219	162	131	75	63
NF2(OPzS)-500	761	655	507	351	274	222	126	105
NF2(OPzS)-600	824	739	608	446	353	284	163	137
NF2(OPzS)-800	1098	985	810	594	470	380	217	184
NF2(OPzS)-1000	1371	1230	1013	742	589	473	271	229
NF2(OPzS)-1200	1645	1477	1215	891	706	568	326	276
NF2(OPzS)-1500	1716	1593	1368	1037	808	645	367	306
NF2(OPzS)-2000	2167	2012	1726	1311	1076	861	488	409
NF2(OPzS)-3000	3250	3019	2593	1967	1543	1261	731	615

End Voltage 1.75 Vpc

Model Number	15 Mins	30 Mins	1 Hour	2 Hours	3 Hours	4 Hours	8 Hours	10 Hours
NF2(OPzS)-200	336	280	208	145	109	87	49	41
NF2(OPzS)-300	505	419	313	217	162	131	75	63
NF2(OPzS)-500	645	630	504	358	274	222	126	105
NF2(OPzS)-600	675	613	518	393	347	284	163	137
NF2(OPzS)-800	901	818	692	524	464	380	217	184
NF2(OPzS)-1000	1126	1023	864	656	579	473	271	229
NF2(OPzS)-1200	1350	1228	1037	787	694	568	326	276
NF2(OPzS)-1500	1399	1313	1116	841	803	645	367	306
NF2(OPzS)-2000	1825	1795	1526	1256	1125	904	512	429
NF2(OPzS)-3000	2738	2693	2288	1883	1582	1315	768	646

End Voltage 1.80 Vpc

Model Number	15 Mins	30 Mins	1 Hour	2 Hours	3 Hours	4 Hours	8 Hours	10 Hours
NF2(OPzS)-200	293	249	190	137	106	85	49	41
NF2(OPzS)-300	441	375	286	205	157	128	75	63
NF2(OPzS)-500	625	561	449	334	262	214	126	105
NF2(OPzS)-600	659	610	514	411	328	269	161	136
NF2(OPzS)-800	879	814	687	549	437	358	213	182
NF2(OPzS)-1000	1098	1016	857	685	547	447	267	227
NF2(OPzS)-1200	1318	1220	1029	823	656	537	320	274
NF2(OPzS)-1500	1343	1295	1124	924	742	612	367	306
NF2(OPzS)-2000	1792	1728	1498	1231	990	815	488	409
NF2(OPzS)-3000	2688	2592	2248	1846	1485	1224	731	615

Constant Current Discharge (Amps)

End Voltage 1.75 Vpc

Model Number	10 Mins	15 Mins	30 Mins	45 Mins	1 Hour	2 Hours	3 Hours	4 Hours	8 Hours	10 Hours
NF2(OPzS)-200	192	184	141	111	101	66	50	41	24	20
NF2(OPzS)-300	289	276	212	167	152	99	76	62	37	31
NF2(OPzS)-500	434	419	345	276	256	171	130	104	64	54
NF2(OPzS)-600	475	460	382	319	298	198	153	125	74	62
NF2(OPzS)-800	634	614	509	426	398	264	204	166	98	82
NF2(OPzS)-1000	792	767	636	532	497	330	255	208	123	103
NF2(OPzS)-1200	951	921	764	639	597	396	306	250	148	124
NF2(OPzS)-1500	962	945	885	723	718	505	387	316	188	156
NF2(OPzS)-2000	1283	1260	1180	964	958	674	516	422	251	208
NF2(OPzS)-3000	1925	1891	1770	1447	1437	1011	775	633	377	313

NF 6 & 12 VOLT SERIES

Features

- Long design life: 20 years @ 25°C float
- Proven reliability
- Wide operational temperature range: -20°C to 50°C .
- Meets Battery Design Standards; DIN40737 and IEC896-1.

General Specifications

Battery Model No.	Voltage (Volts)	Nominal Capacity C ₁₀ To 1.80 Vpc	Length (mm)	Width (mm)	Height (mm)	Weight (Kg)		Terminal Type/ Layout	Internal Impedance (MilliOhms)	Short Circuit Current (Amps)
						Dry	Filled with acid			
NF12-50	12	50	272	205	390	25.5	37.0	M8	17.25	680
NF12-100	12	100	272	205	390	39.0	48.0	M8	10.50	1114
NF12-150	12	150	380	205	390	54.0	68.0	M8	7.05	1660
NF6-200	6	200	272	205	390	35.0	45.5	M8	2.40	2450
NF6-250	6	250	380	205	390	45.0	59.0	M8	2.11	2773
NF6-300	6	300	380	205	390	51.0	65.0	M8	1.81	3233

PERFORMANCE DATA @ 25°C

Constant Current Discharge (Amps)

End Voltage 1.70 Vpc

Model Number	10 Mins	15 Mins	30 Mins	45 Mins	1 Hour	2 Hours	3 Hours	4 Hours	8 Hours	10 Hours
NF12-50	58	52	47	30	27	17	13	11	6	6
NF12-100	115	103	93	59	53	33	25	21	12	10
NF12-150	172	154	139	89	79	50	38	32	18	15
NF6-200	229	207	186	118	106	68	52	43	26	22
NF6-250	286	259	233	148	133	86	64	54	33	27
NF6-300	344	311	279	177	159	102	77	64	40	32

End Voltage 1.85 Vpc

Model Number	10 Mins	15 Mins	30 Mins	45 Mins	1 Hour	2 Hours	3 Hours	4 Hours	8 Hours	10 Hours
NF12-50	31	30	25	20	20	14	11	9	6	5
NF12-100	61	59	49	40	39	27	21	18	11	10
NF12-150	92	89	73	60	59	41	32	27	17	15
NF6-200	123	118	99	81	77	54	43	36	22	19
NF6-250	154	148	124	101	96	68	54	45	28	24
NF6-300	185	177	149	122	116	81	65	54	33	29

YHI POWER PTY LTD (Australia)



Head Office

1044-1046 Canley Vale Road
 Wetherill Park, NSW 2164
 Ph: (02) 9729 2288
 Fax: (02) 9756 4066
 Email: sales@yhipower.com.au
 Website: www.yhipower.com.au

Melbourne Office

94 Malcolm Road
 Braeside, Vic 3195
 Ph: (03) 9588 1888
 Fax: (03) 9588 0838
 Email: dochert@yhipower.com.au

Brisbane Office

Ph: 0422 000 276
 Email: ghawker@yhipower.com.au