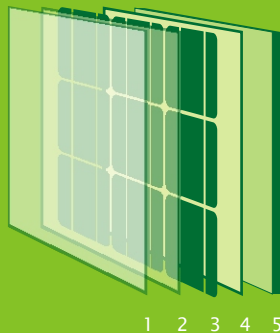




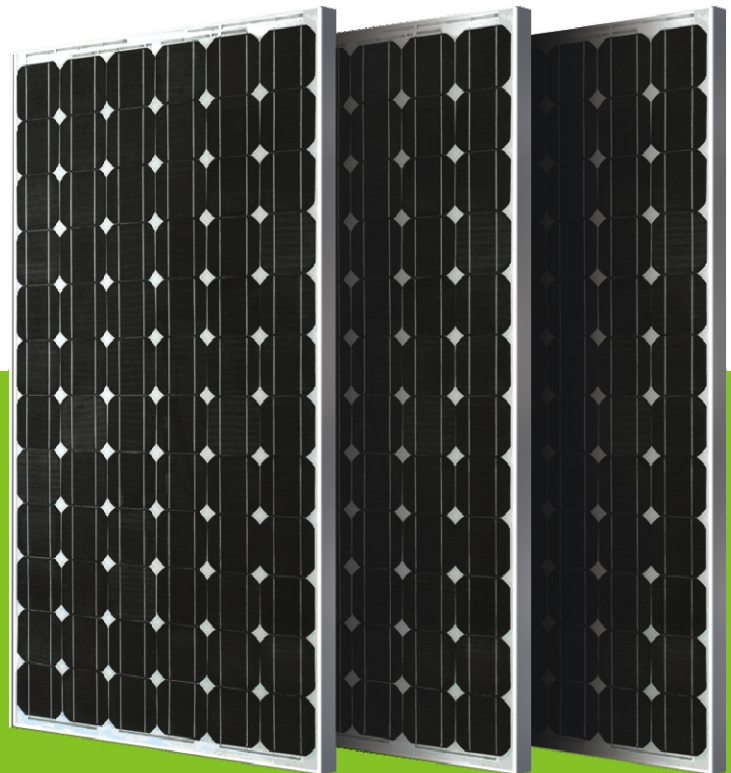
**ASTRO**energy

A CHINT COMPANY

# CHSM 5612M



- 1 Glass
- 2 EVA
- 3 Cell Array
- 4 EVA
- 5 Backsheet



## AVAILABLE WATTAGES

170

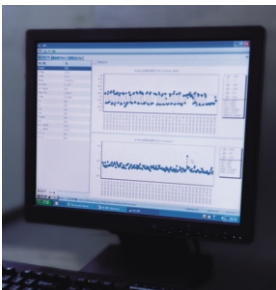
175

180

185

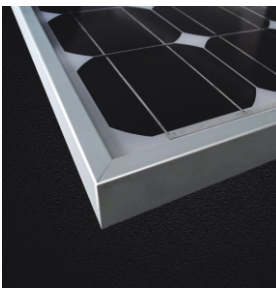
190

## Precision Solar Cell Manufacturing



- First PV company in Mainland China to use Manufacturing Execution System (MES) in solar cell production. The products, processes, and equipments are strictly controlled using SPC tools for the highest quality and performance.

## Aesthetic Appeal



- Modules are assembled with high quality, smooth aluminum alloy frames.

## State-of-the-Art Solar Module Manufacturing



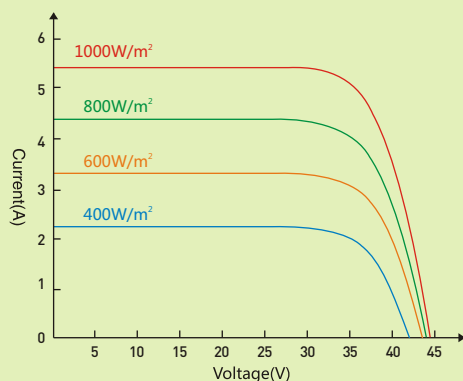
- Within the same power range and efficiency, cells are further sorted by the short circuit current in order to minimize losses caused by electric-mismatch.
- IV and EL tests are performed before the lamination to ensure the consistency of encapsulated cells and process reliability.
- The EL test is repeated on each module before shipping to ensure product's quality and reliability.



## CHSM 5612M

## Electrical Characteristics

### Electrical Characteristics



Pmax(Wp)	170	175	180	185	190
Isc(A)	5.35	5.42	5.49	5.55	5.61
Voc(V)	44.24	44.55	44.86	45.17	45.48
Imp(A)	4.96	5.02	5.09	5.16	5.23
Vmp(V)	34.30	34.82	35.34	35.86	36.29
Tolerance(Wp)	±3%				
Max. System Voltage(V)	DC1000V for SC II and DC600V for USA NEC				
NOCT	48.6°C				
Power Temp. Coeff(/°C)	-0.47950%				
Current Temp. Coeff(/°C)	0.06248%				
Voltage Temp. Coeff(/°C)	-0.35514%				
Ambient Temp. (°C)	-40~85				
Max. Mechanical Load(Kg/m²)	540				
Test Condition	Irradiance of 100 mW/cm², AM1.5 Spectrum, and a Cell Temperature of 25°C				

## Dimension Characteristics

Length	1580mm / 5.184feet	Width	808mm / 2.651feet
Height	45mm / 0.148feet	Weight	15.5kg / 34.1lbs
Cell Type	125×125(mm) Monocrystalline Silicon		
Cell Matrix	6×12	Cell Number	72 pcs
Frame	Aluminum Alloy		

## Front View and Back View

Front View	Side View	Back View	Frame Cross-section
<p>808mm / 2.651feet</p> <p>1580mm / 5.184feet</p>	<p>45mm / 0.148 feet</p>	<p>16-3.5mm × 8.8mm / 0.011 × 0.028 feet Waterspout</p> <p>4-Ø5mm / 0.018 feet Ground hole</p> <p>100mm / 0.328 feet</p> <p>1000mm / 3.281 feet</p> <p>764mm / 2.507 feet</p> <p>790mm / 2.592 feet</p> <p>200mm / 0.656 feet</p> <p>6-7mm × 11.5mm / 0.023 feet × 0.038 feet Mounting slots</p> <p>A-A</p>	<p>2mm / 0.007 feet</p> <p>32mm / 0.105 feet</p> <p>45mm / 0.148 feet</p> <p>12mm / 0.039 feet</p> <p>A-A</p>